

Post 16 Prospectus 2008

South Sandwell Consortium

Shireland

George Salter

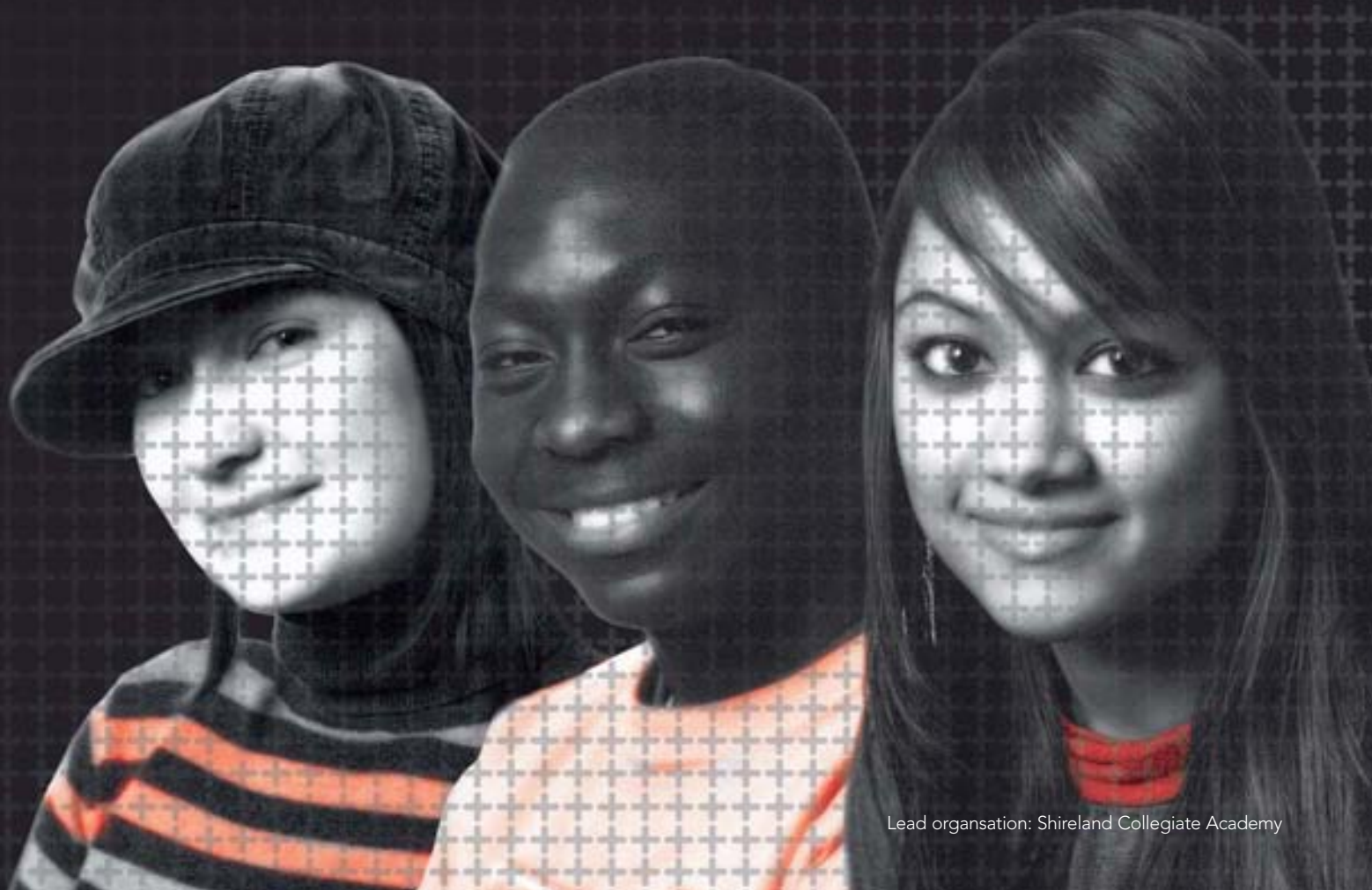
Perryfields

Holly Lodge

Bristnall Hall

Oldbury

Sandwell College



Welcome	2
Shireland	4
George Salter	5
Perryfields	6
Holly Lodge	7
Bristnall Hall	8
Oldbury	9
Sandwell College	10
Student Support	12
Student Union	14
Decided?	15
Selecting Courses	16

Inside

Welcome to the
South Sandwell
Consortium (SSC)
Guide for School
Leavers 2008/2009

Welcome to the Consortium

This guide gives you an idea of what the Consortium is all about. It shows the courses you can take and the facilities available at each campus.

Since its opening in 2002 at the Shireland Campus with forty students, the Consortium has grown to its current total of more than 350 learners. This has been achieved by setting high standards of subject teaching and care for students and by developing new educational partnerships. Campuses were further established at George Salter High School in 2006 and at Perryfields High School Maths and Computing College in 2007. From September 2008 there will also be post 16 campuses at Bristnall Hall Technology College, Holly Lodge College of Science and Oldbury College of Sport. SSC works closely with Sandwell College and local training providers to offer a full range of opportunities to the young people in our community.

The structure of the Consortium allows students to access a large number of programmes with a variety of exciting course combinations. Each campus within the SSC has a specialism for a curriculum area. Learners have the best of both worlds by being able to combine a core curriculum and quality pastoral care within their home campus with a range of course combinations. Transport between each campus is organised to ensure safe and reliable movement of learners*

To find out more about sixth form study in the South Sandwell Consortium telephone the Sixth Form Office at Shireland Collegiate Academy on 0121 565 8807 or email j.marshall@shireland.sandwell.sch.uk

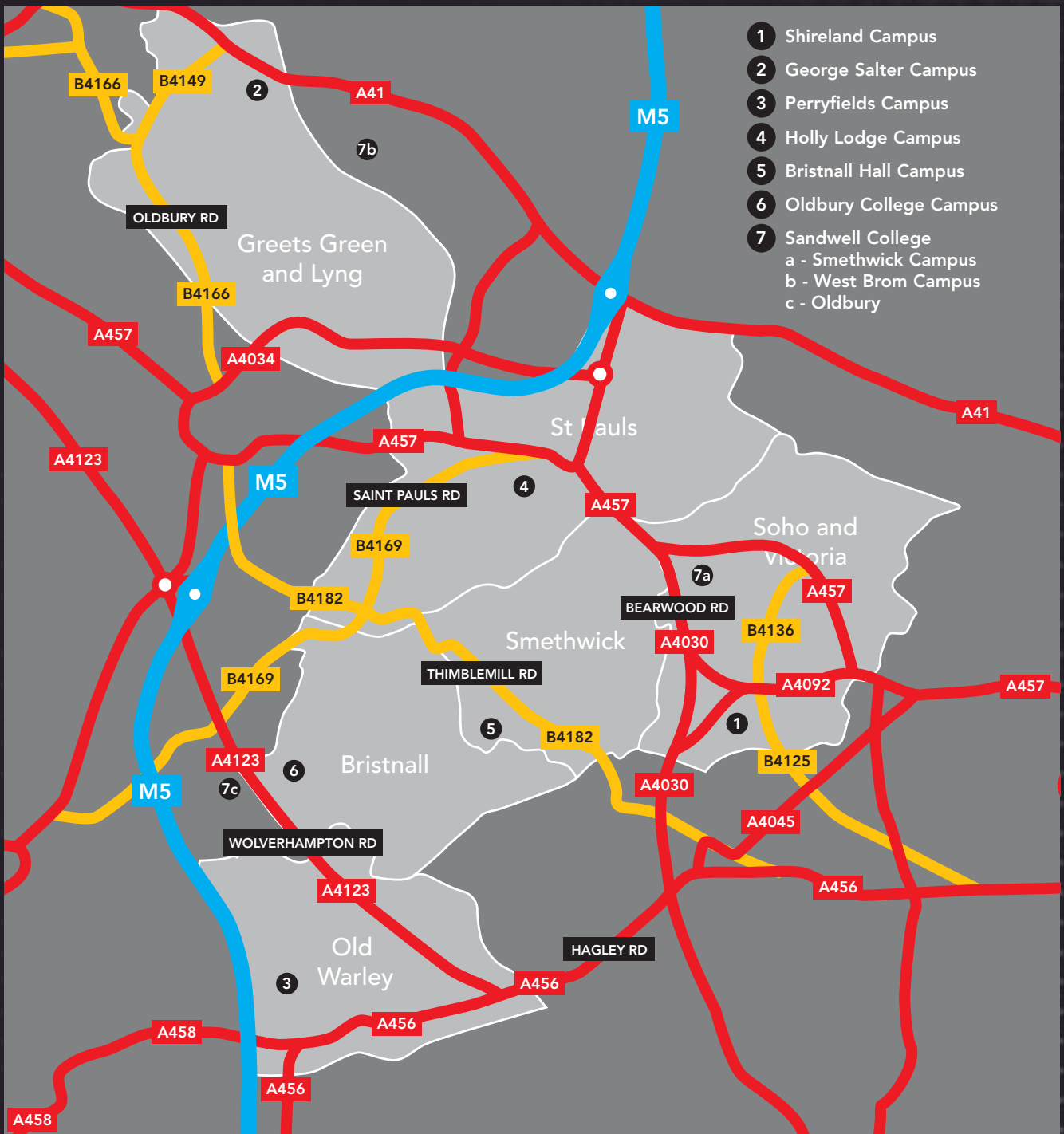
* Programmes may operate over two campuses



"I'd recommend the Consortium, especially to students who have been in the school's since Year 7. It makes the transition to A Levels much easier"

James





- 1 Shireland Campus
- 2 George Salter Campus
- 3 Perryfields Campus
- 4 Holly Lodge Campus
- 5 Bristnall Hall Campus
- 6 Oldbury College Campus
- 7 Sandwell College
 - a - Smethwick Campus
 - b - West Brom Campus
 - c - Oldbury

<p>Shireland Campus Waterloo Road, Smethwick B66 4ND Tel: 0121 565 8807 j.marshall@shireland. sandwell.sch.uk</p>	<p>Perryfields Campus Oldacre Road, Oldbury B69 0RG Tel: 0121 421 7979 nick.memmery@perryfieldhigh. sandwell.sch.uk</p>	<p>Bristnall Hall Campus Bristanll Hall Lane, Oldbury B68 9PA Tel: 0121 552 5425 Contact: Main Reception</p>	<p>Sandwell Campus Pound Road, Oldbury B68 8NA Tel: 0800 622 006 enquiries@sandwell.ac.uk</p>
<p>George Salter Campus Claypit Lane, West Bromwich B70 9UW Tel: 0121 553 4665 beryl.curtis@georgesalter. sandwell.sch.uk</p>	<p>Holly Lodge Campus Holly Lane, Smethwick B67 7JG Tel: 0121 558 0691 Contact: Main Reception</p>	<p>Oldbury Campus Upper School Site, Pound Lane, Oldbury B68 8NE Tel: 0121 544 7521 Contact: Main Reception</p>	

Shireland Campus

Shireland is proud
to be the lead
organisation
for the South
Sandwell Consortium

Post 16 provision started in 2002 and has become a huge success having a dramatic impact on student's learning throughout the area. The campus builds on the outstanding local and national reputation by offering superb, modern courses at a variety of different levels that cater for all students. The campus received a glowing Ofsted report in 2006 and has further developed all aspects of Sixth form to improve the excellent provision we offer our students.

Campus Specialism

The campus is part of the newly formed Shireland Collegiate Academy and as a result has seen its buildings and facilities become state of the art. This investment supports the campus specialisms in the Arts and languages. However, the superb facilities on offer at Shireland, alongside well qualified, experienced staff allow teachers to deliver to a very high standard in all subject areas.

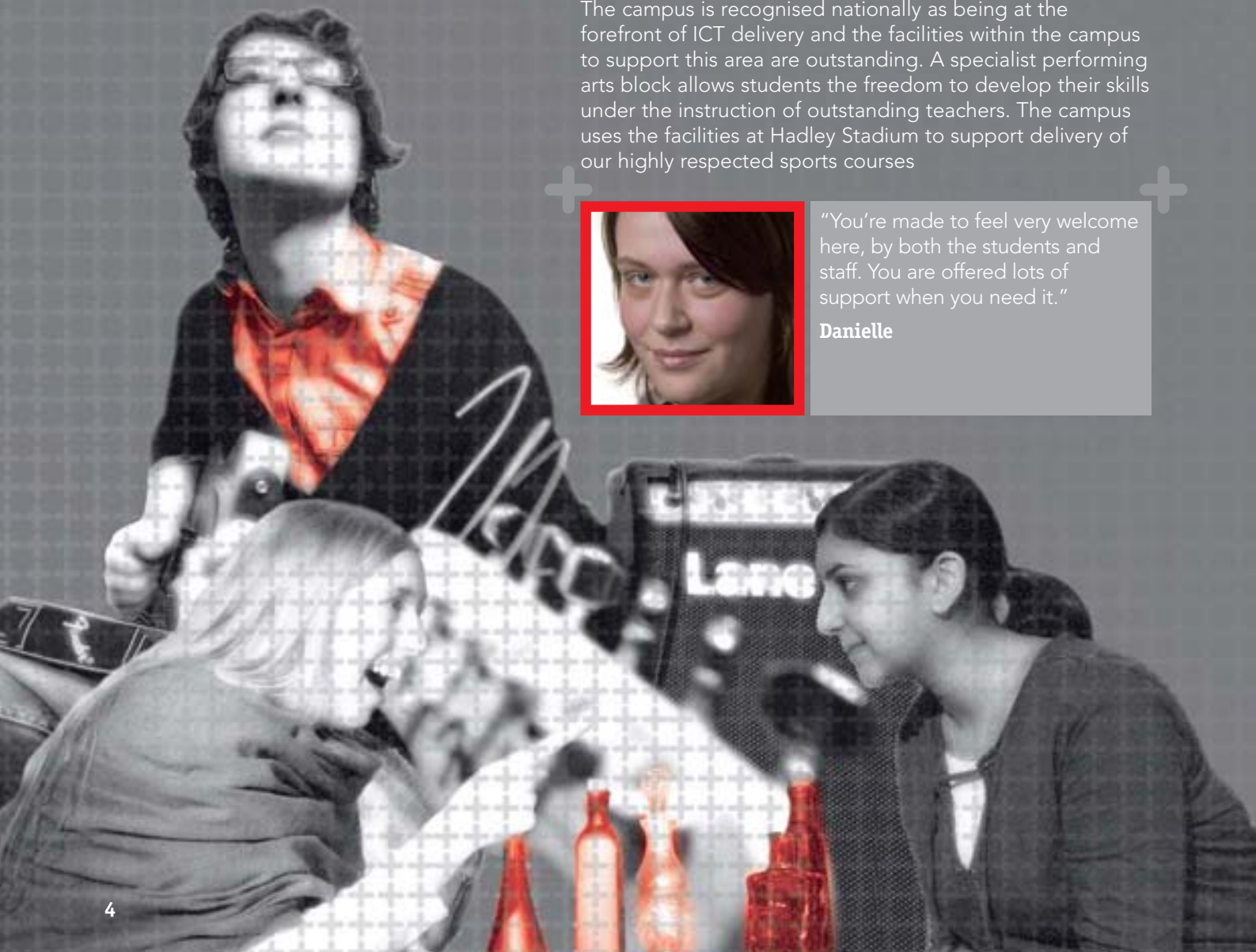
Facilities

The campus is recognised nationally as being at the forefront of ICT delivery and the facilities within the campus to support this area are outstanding. A specialist performing arts block allows students the freedom to develop their skills under the instruction of outstanding teachers. The campus uses the facilities at Hadley Stadium to support delivery of our highly respected sports courses



"You're made to feel very welcome here, by both the students and staff. You are offered lots of support when you need it."

Danielle



George Salter Campus

George Salter campus has been a key part of the SSC since it started offering post-16 education in 2006

Post 16 success has in many areas mirrored the outstanding achievements of the lower school and is rapidly becoming accepted by parents, students and the local community as a quality extension to education in West Bromwich.

Campus Specialism

The campus offers a wide range of specialist subject areas. All departments have experienced teachers who are passionate about their subject. Sixth form students benefit from extensive subject specific support ranging from the provision of academic coaches in each subject, to masterclasses and Saturday schools. Some students have also had the opportunity to take part in external exhibitions and events. Rigorous academic monitoring is carried out on a regular basis and close liaison exists between academic staff and the pastoral team.

Facilities

Academy status has led to a huge investment programme with dramatic changes to buildings and the level of facilities. Students have access to cutting edge ICT provision and each department is now at the forefront of educational practice. All Post-16 students are given the opportunity of entering into a Laptop Loan agreement, and many students benefit from this facility. Independent study rooms are provided for students to study either in silence, or in discussion group situations. A brand new library and fully qualified library staff support students in their quest for independent learning skills.

Students also have facilities for relaxation and refreshment and the Sixth Form Council is instrumental in providing valued facilities.



"I've really enjoyed my time here and I'm so glad I made the right decision in where to study after I turned 16."

Sarah



Perryfields Campus

The focus on the campus specialism is obvious when you enter the building

Perryfields would like to invite you to study at their campus. The campus has been working as part of the SSC for over a year and is developing an excellent reputation for the delivery of high quality 'A' level subjects

Campus Specialism

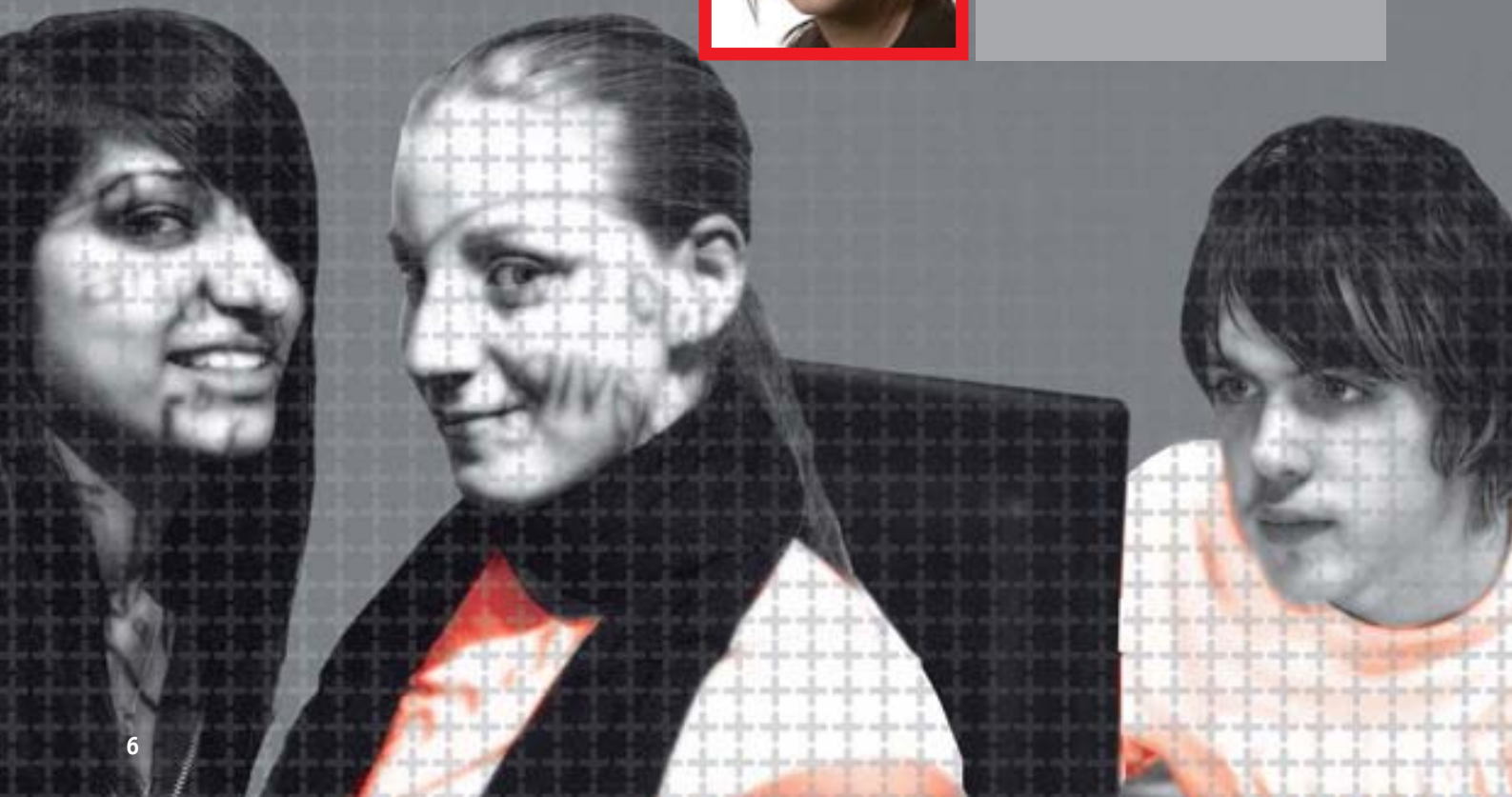
The campus was awarded specialist status in Mathematics and Computing in 2004 and has developed its provision and facilities into one of the best in the area. The focus on the specialism is obvious when you enter the building and results have been outstanding.

Facilities

The development of the specialism in Mathematics and Computing and the sixth form has enabled the build of an impressive new teaching block. This £4 million block where many of the Post 16 lessons are held, is state of the art and boasts innovative ICT suites and Mathematics areas, alongside quality learning bases for other subjects. In addition the campus has a dedicated Post 16 common room with facilities to allow students time to relax and socialise as well as a learning area for students to use during independent learning sessions.



"I'm really enjoying my first year studying here. All of my teachers are great and very helpful when I need advice or support."
Pavandip



Holly Lodge Campus

Holly Lodge Campus
would like to offer
a warm welcome
to students from
across the SSC

At Holly Lodge, we offer sciences and a range of health and social care courses – as well as a package of other Level 2 and 3 courses in collaboration with other consortium schools. The specialist courses on offer are ideally suited to students that seek progression routes into work within the health or social care science sectors, either through higher education, further education and training or directly into employment.

Campus Specialism

Holly Lodge High School College of Science became the first of two Health Innovation Schools in the country in September 2005 funded by the DfES Innovations Unit. This exciting initiative has enabled the school to develop quality specialist post-16 courses in the areas of both Health and Science that include a collaborative delivery with the local Primary Care and Hospital Trusts and a range of private Care sector providers. Health, Care and Science professionals regularly work alongside our dedicated team of teaching staff to enhance the learning experience and support the practical emphasis we place on our courses.

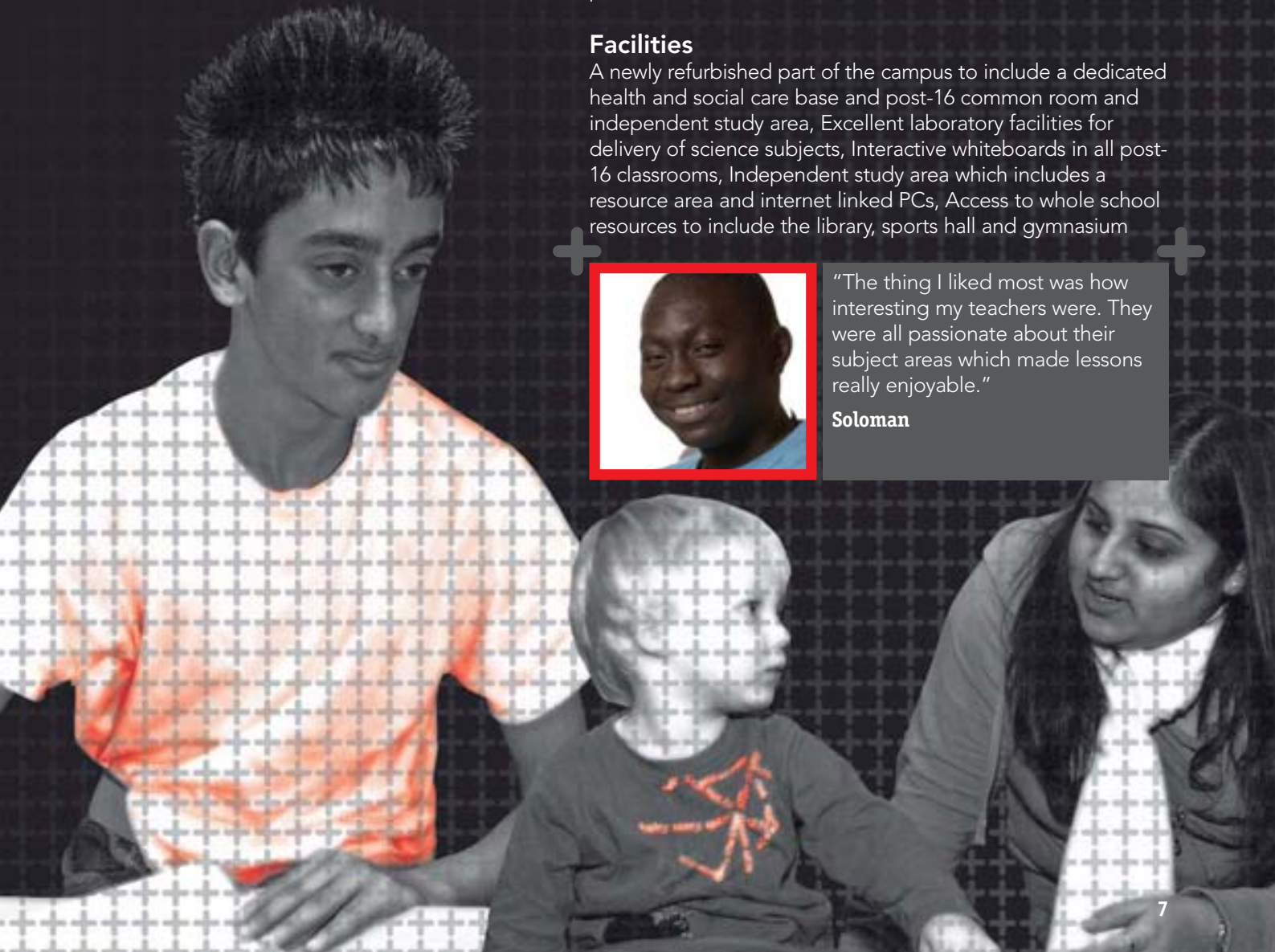
Facilities

A newly refurbished part of the campus to include a dedicated health and social care base and post-16 common room and independent study area, Excellent laboratory facilities for delivery of science subjects, Interactive whiteboards in all post-16 classrooms, Independent study area which includes a resource area and internet linked PCs, Access to whole school resources to include the library, sports hall and gymnasium



"The thing I liked most was how interesting my teachers were. They were all passionate about their subject areas which made lessons really enjoyable."

Soloman



Bristnall Hall Campus

Bristnall Hall is embarking on an exciting adventure as a post 16 Campus within the SSC

The campus has collaborated within the consortium for a number of years but is now increasing its provision to cater for every student. Bristnall is suited to a wide range of learners but focuses on its key specialist status – Design and Technology

Campus Specialism

Awarded specialist status for Design and Technology in 2004 the campus excels in courses such as Graphics, Food Technology, Hospitality and Catering, Resistant Materials, Textiles and CAD/CAM. Specialist teaching staff with a wealth of experience in these areas are able to take the students learning to another level.

Facilities

Bristnall Hall has state of the art facilities within a mixture of traditional and modern buildings, all contained on one site. The Design and Technology area is made up of seven specialist rooms. Facilities for Design and Technology include rooms for Graphics, Resistant Materials, Food Technology, Textiles and two fully equipped areas dedicated to CAD/CAM (Computer Aided Design and Manufacture). The campus has a range of other superb facilities that ensure the quality delivery of the other subjects such as extensive ICT areas and specialist rooms for Science, Mathematics and Modern Foreign Languages.



"I was motivated by my teachers to work hard and succeed in my exams."

Koli



Oldbury Campus

Oldbury Campus is
proud to be involved
in the South
Sandwell Consortium

In collaboration with other providers we aim to give SSC students access to a full range of educational opportunities that will enable them to reach their full potential at all levels. This is Oldbury College of Sport's first year as part of the consortium but there is no doubt that it will build on its excellent reputation for academic success.

Campus Specialism

The campus offers a range of options and courses through consortium delivery. As a Sports College we are specialising in PE, Sport, Performing Arts- Dance, Vocational Subjects e.g. Travel and Tourism, Leisure and Tourism, Business Studies.

Facilities

Since achieving specialist sports status in 2004 the campus has developed an impressive level of facilities and resources. As part of the specialist programme the campus has been redeveloped

Students will have their own base within the campus with access to a full range of ICT and sports facilities.



"It was a great place to study. I made loads of new friends and thanks to my teachers I did well in my final exams."

Jyoti



Sandwell College Campus

Pursue a wide range of courses such as beauty, motoring, public services and fashion

The South Sandwell Consortium works very closely with Sandwell College. The specific expertise that a large college can provide the Consortium allows students the opportunity to pursue a wide range of courses such as Beauty, Light Vehicle, Public Services and Fashion.

Sandwell College is based over 3 campuses, with all having a vibrant atmosphere and diverse student population of all ages and backgrounds which represents the wider community. Each of the campuses has a specialism that the consortium accesses.

Smethwick Campus has many specialisms. The consortium continues to develop its course offer by the inclusion of the construction areas like Plastering, Plumbing, Engineering, Painting & Decorating, Electrical Installation and Carpentry and Joinery. Smethwick Campus also has a large IT and Computing section with great facilities.

The West Bromwich Campus has many specialisms, but is predominantly geared towards 16-18 year olds. Subjects based here for the consortium Beauty studies and Fashion.

The Oldbury Campus is the smallest of the three campuses. It has traditionally been the home of all the support services like the award winning Marketing Department, Finance, Personnel and the Print Unit. Subjects based here for the consortium include all the Automotive subjects.

Each of the campuses boasts specialist equipment for each of the courses offered within the consortium. Like the rest of the Consortium offer transport is provided for students who take advantage of the facilities at each campus.



"I feel that my experience here over the last couple of years will benefit me for life."

Lorretta



Student Support

Staff are always ready to help students with any problems they may face

Staff are always ready to help students with any problems they may face during their Post-16 studies. All students will be allocated to a small tutor group and have a personal tutor. The tutor will be able to ensure that every individual's needs are met, and will liaise with other SSC staff as appropriate. Students will also have access to mentors and counsellors who can offer extra support if appropriate.

Parents will receive regular progress updates, and will be encouraged to contact the Sixth Form Co-ordinators to discuss any problems at an early stage. In addition, there will be two formal invitations each year to review progress. Staff within the SSC take great pride in enabling each individual to be successful. Every effort will be made to ensure that students can take the subjects of their choice, at an appropriate level to suit their individual needs. Sessions are taught by specialist staff and will be supported by private study periods.

Students who attend SSC will receive guidance and support in becoming independent learners, who can take responsibility for their own work and for managing their own time. These skills are highly valued by employers and universities.



"Why should you study here? The question is, why wouldn't you?!"

Kirenjit





Equal Opportunities

The Consortium welcomes all applicants regardless of colour, race, religious belief, nationality, sexuality, ethnicity, disability or background.

Special Educational Needs

Students with a statement of special educational needs should inform the Consortium at the time of application to the Sixth Form, so that appropriate support can be arranged.

Likewise, the Consortium should be advised in advance of any disability, so that positive steps can be taken to accommodate specific requirements.

Education Maintenance Allowance

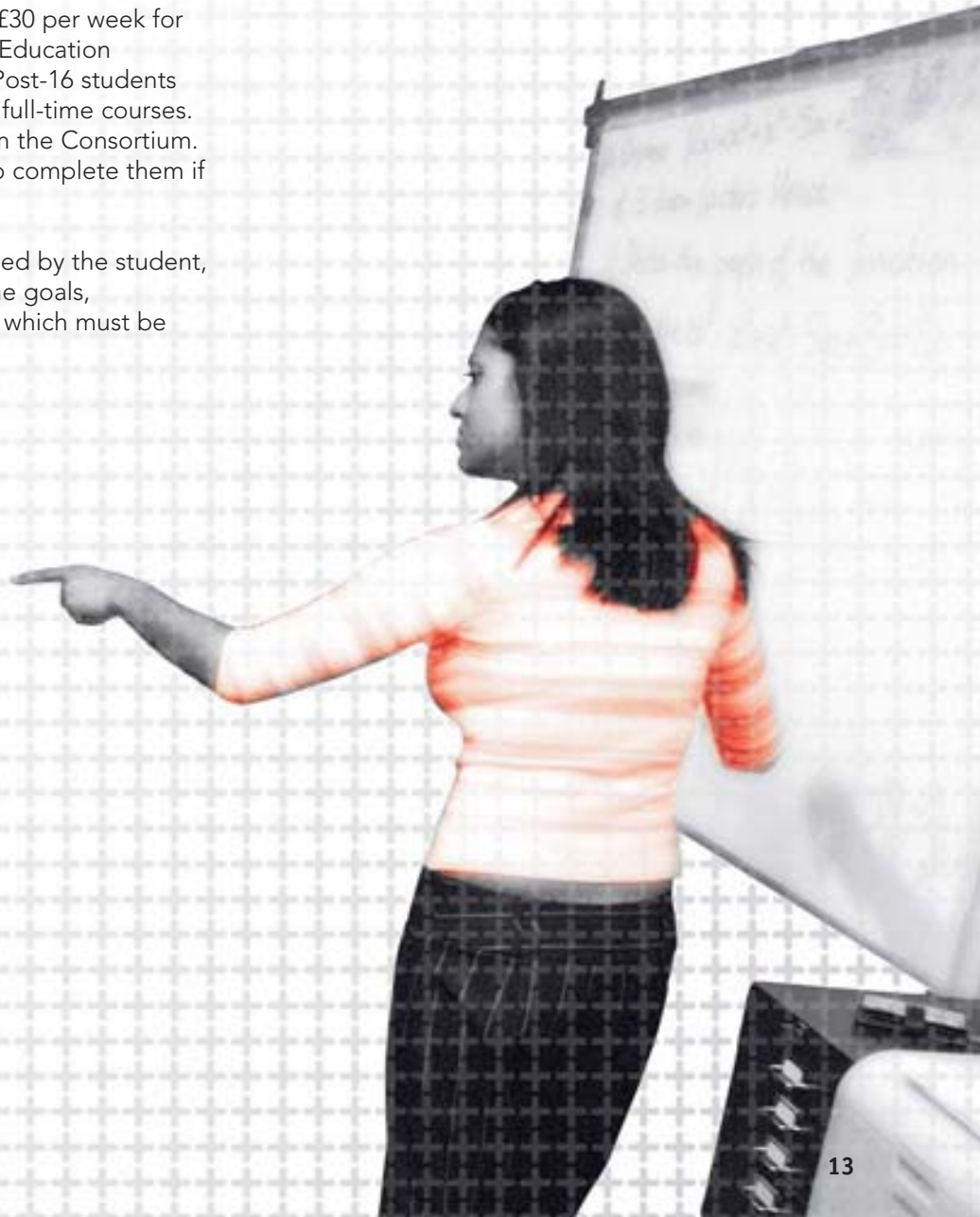
Students may be eligible for up to £30 per week for choosing to stay in education. The Education Maintenance Allowance is paid to Post-16 students from low-income families following full-time courses. Application forms are available from the Consortium. Help and advice will be provided to complete them if required.

A learning agreement must be signed by the student, parent and tutor. This will set out the goals, attendance and homework targets, which must be met to receive payment.

Careers and Guidance

The Consortium works in partnership with Connexions Prospects to provide students with a range of free careers services.

The Consortium has Connexions Personal Advisors. They will help students to make informed decisions about their future. Progression routes after Sixth Form include Higher Education, Modern Apprenticeships and employment.



Student Union

Becoming an
SSC student
automatically makes
you a member of the
Students' Union

- Act as a student voice across the consortium ensuring students' opinions and concerns are heard at the highest level
- Provide a focus for local and national campaigns that reflect the diverse nature of students across the consortium.
- Organise the social events and exciting fundraising activities through the SSC year. Students this year have been to theatre trips, paint balling and go-karting as part of the monthly programme of events.

We are really keen that you come to the SSC and get involved – it's your Union.

Electives

You will have plenty of opportunities to pursue a variety of interests. The Consortium strongly believes that your time with us should be about more than academic excellence and should give you a number of skills and interests. These programmes will allow you to explore your own boundaries and discover new things about yourself. The Wednesday afternoon elective programme is a key strength within SSC. It offers a number of enrichment activities such as Duke of Edinburgh, Sports coaching awards, Sports and fitness activities such as martial arts, competitive local and national sports, Sign Language, mentor training and many more. To find out more and see pictures of the students enjoying the elective programme please visit the consortium website.



"The key to the Consortium's success is down to the quality of the teaching."

Joe



Have you decided
what courses to
apply for?

Decided?

Yes

If you have decided which course(s) you want to apply for, then you need to complete the attached application form and return it to the Sixth form office. You will hear from the admissions team within two weeks of us receiving your application.

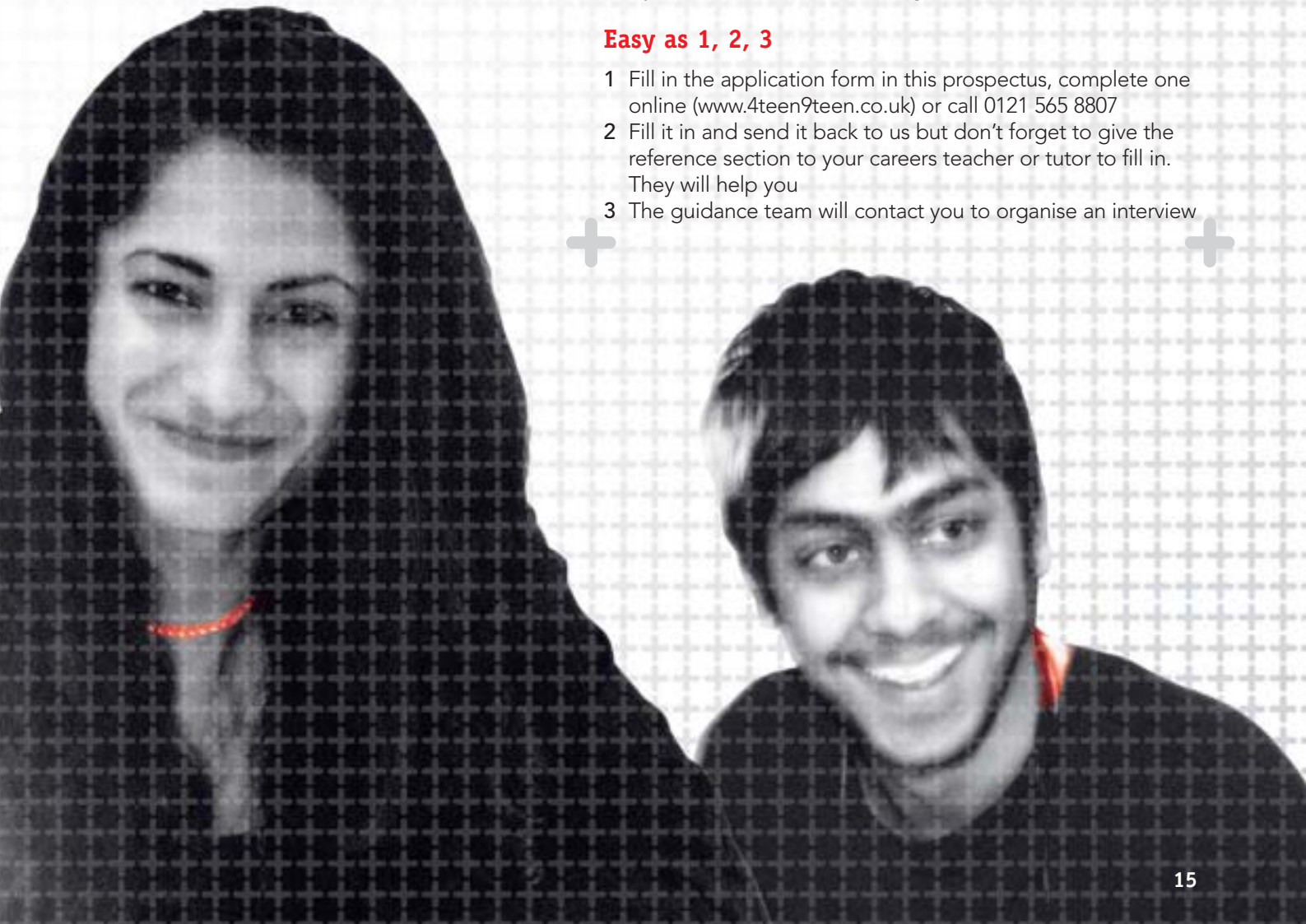
No

We know things can get a bit confusing as there are more courses and qualifications on offer than ever before. The information in the subject guide should tell you more about the type of courses we offer, their content and where they will take you.

Think about which subjects you enjoyed or were good at, that is usually a good starting point. If you have a few areas that you are interested in, then come along to one of our open days, talk to the tutors and get a feel for the Consortium or contact your local connexions advisors. Do not rush into making a decision; you need to make the next few years count, so start thinking about it now.

Easy as 1, 2, 3

- 1 Fill in the application form in this prospectus, complete one online (www.4teen9teen.co.uk) or call 0121 565 8807
- 2 Fill it in and send it back to us but don't forget to give the reference section to your careers teacher or tutor to fill in. They will help you
- 3 The guidance team will contact you to organise an interview



Selecting courses

Use this flow chart to help you make the right decisions when choosing your courses

Selecting your courses



Read the course descriptions in the Subject booklet



Go and see the head of department for more advice about courses that interest you.



Decide what level you are likely to be and select four courses that are suitable



Get the application form from the back of the course slides.



Fill in application form and get references – return to Head of 6th form



Attend the interview



Work hard in your exams!

